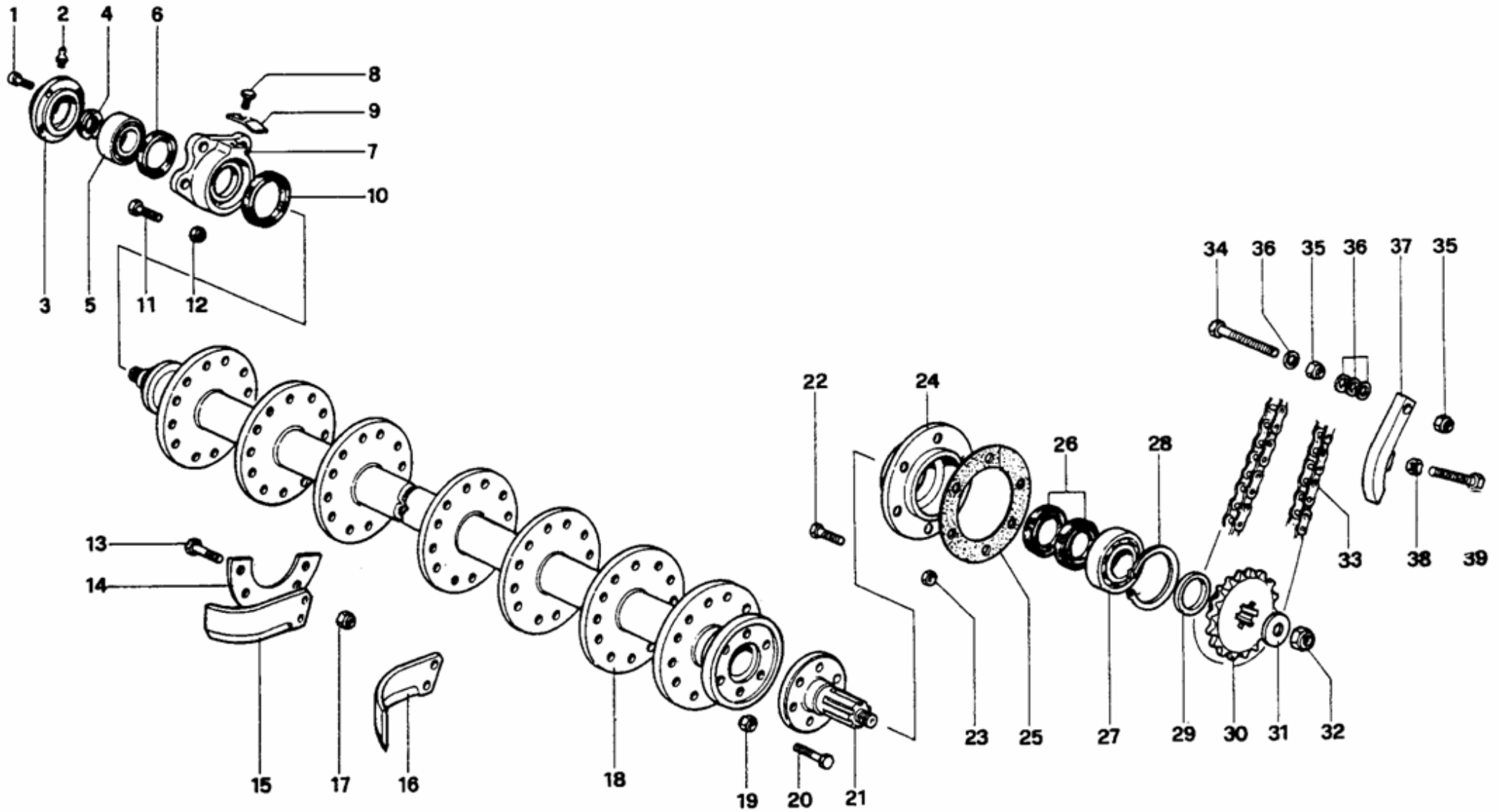


ROTOR
ROTOR
ROTORE
ROTOR
ROTOR

INT



B-7-3-0

| REF | CODE | QTY | ENGLISH | FRANÇAIS | ITALIANO | DEUTSCH | ESPAÑOL | NOTE |
|-----|---------------|-----|---------------|--------------|--------------|----------------|---------------|------|
| 1 | 900.102.203 | 4 | SCREW | VIS | VITE | SCHRAUBE | TORNILLO | |
| 2 | 900.105.007 | 1 | GREASE NIPPLE | GRAISSEUR | INGRASSATORE | SCHMIERNIPPEL | ENGRASADOR | |
| 3 | 900.110.023 | 1 | CLAMPING | CHAPEAU | CAPPELOTTO | KAPPE | CAPUCHON | |
| 4 | 900.103.069 | 1 | RING NUT | EMBOUT | GHIERA | NUTMUTTER | CASQUILLO | |
| 5 | 900.100.016 | 1 | BEARING | ROULEMENT | CUSCINETTO | KUGELLAGER | COJINETE | |
| 6 | 900.101.001 | 1 | OIL SEAL | PARE-HUILE | PARAOLIO | SIMMERRING | PARA-ACEITE | |
| 7 | 900.110.013 | 1 | SUPPORT | SUPPORT | SUPPORTO | STUETZE | SOPORTE | |
| 8 | 900.102.010 | 1 | SCREW | VIS | VITE | SCHRAUBE | TORNILLO | |
| 9 | 900.110.043 | 1 | SCRAPER | RACLEUR | RASCHIARULLO | WALZENSCHABER | RASCARDILLO | |
| 10 | 900.107.022 | 1 | RING | ANNEAU | ANELLO | RING | ANILLO | |
| 11 | 900.102.020 | 4 | SCREW | VIS | VITE | SCHRAUBE | TORNILLO | |
| 12 | 900.103.019 | 4 | NUT | ECROU | DADO | MUTTER | TUERCA | |
| 13 | 900.102.232 | - | SCREW | VIS | VITE | SCHRAUBE | TORNILLO | |
| 14 | 900.110.048 | - | HALF-FLANGE | DEMI-FLASQUE | SEMI-FLANGIA | HALBFLANSCH | SEMI-BRIDA | |
| 15 | 900.111.010 | - | BLADE | LAME | ZAPPETTA | MESSER | AZADA | |
| 16 | 900.111.009 | - | BLADE | LAME | ZAPPETTA | MESSER | AZADA | |
| 17 | 900.103.027 | - | NUT | ECROU | DADO | MUTTER | TUERCA | |
| 18 | 900.110.122 | 1 | ROTOR | ROTOR | ROTORE | ROTOR | ROTOR | 120 |
| 18 | 900.110.123 | 1 | ROTOR | ROTOR | ROTORE | ROTOR | ROTOR | 140 |
| 18 | 900.110.124 | 1 | ROTOR | ROTOR | ROTORE | ROTOR | ROTOR | 160 |
| 18 | 900.110.125 | 1 | ROTOR | ROTOR | ROTORE | ROTOR | ROTOR | 180 |
| 18 | 900.110.126 | 1 | ROTOR | ROTOR | ROTORE | ROTOR | ROTOR | 200 |
| 19 | 900.103.027 | 6 | NUT | ECROU | DADO | MUTTER | TUERCA | |
| 20 | 900.102.232 | 6 | SCREW | VIS | VITE | SCHRAUBE | TORNILLO | |
| 21 | 900.110.096.1 | 1 | HUB | MOYEU | MOZZO | NABE | MOZO | |
| 22 | 900.102.027 | 6 | SCREW | VIS | VITE | SCHRAUBE | TORNILLO | |
| 23 | 900.103.021 | 6 | NUT | ECROU | DADO | MUTTER | TUERCA | |
| 24 | 900.110.079 | 1 | SUPPORT | SUPPORT | SUPPORTO | STUETZE | SOPORTE | |
| 25 | 900.139.010 | 1 | GASKET | JOINT | GUARNIZIONE | DICHTUNG | JUNTA | |
| 26 | 900.101.002 | 2 | OIL SEAL | PARE-HUILE | PARAOLIO | SIMMERRING | PARA-ACEITE | |
| 27 | 900.100.019 | 1 | BEARING | ROULEMENT | CUSCINETTO | KUGELLAGER | COJINETE | |
| 28 | 900.106.007 | 1 | CIRCLIP | SERFLEX | SEEGER | SEEGER | SEEGER | |
| 29 | 900.112.074 | 1 | SPACER | ENTRETOISE | DISTANZIALE | ABSTANDSRING | DISTANCIADOR | |
| 30 | 900.112.072 | 1 | PINION | PIGNON | PIGNONE | RITZEL | PINON | |
| 32 | 900.103.062 | 1 | RING NUT | EMBOUT | GHIERA | NUTMUTTER | CASQUILLO | |
| 33 | 900.112.019 | 1 | CHAIN | CHAINE | CATENA | KETTE | CADENA | |
| 34 | 900.102.289 | 1 | SCREW | VIS | VITE | SCHRAUBE | TORNILLO | |
| 35 | 900.103.021 | 2 | NUT | ECROU | DADO | MUTTER | TUERCA | |
| 36 | 900.104.021 | 4 | WASHER | RONDELLE | RONDELLA | ZWISCHENSCHIBE | ARANDELA | |
| 37 | 900.113.008 | 1 | STRETCHER | TENDEUR | TENDICATENA | KETTENSANNER | TENSOR CADENA | |
| 38 | 900.103.006 | 1 | NUT | ECROU | DADO | MUTTER | TUERCA | |
| 39 | 900.102.311 | 1 | SCREW | VIS | VITE | SCHRAUBE | TORNILLO | |
| 40 | 900.104.061 | 6 | WASHER | RONDELLE | RONDELLA | ZWISCHENSCHIBE | ARANDELA | |