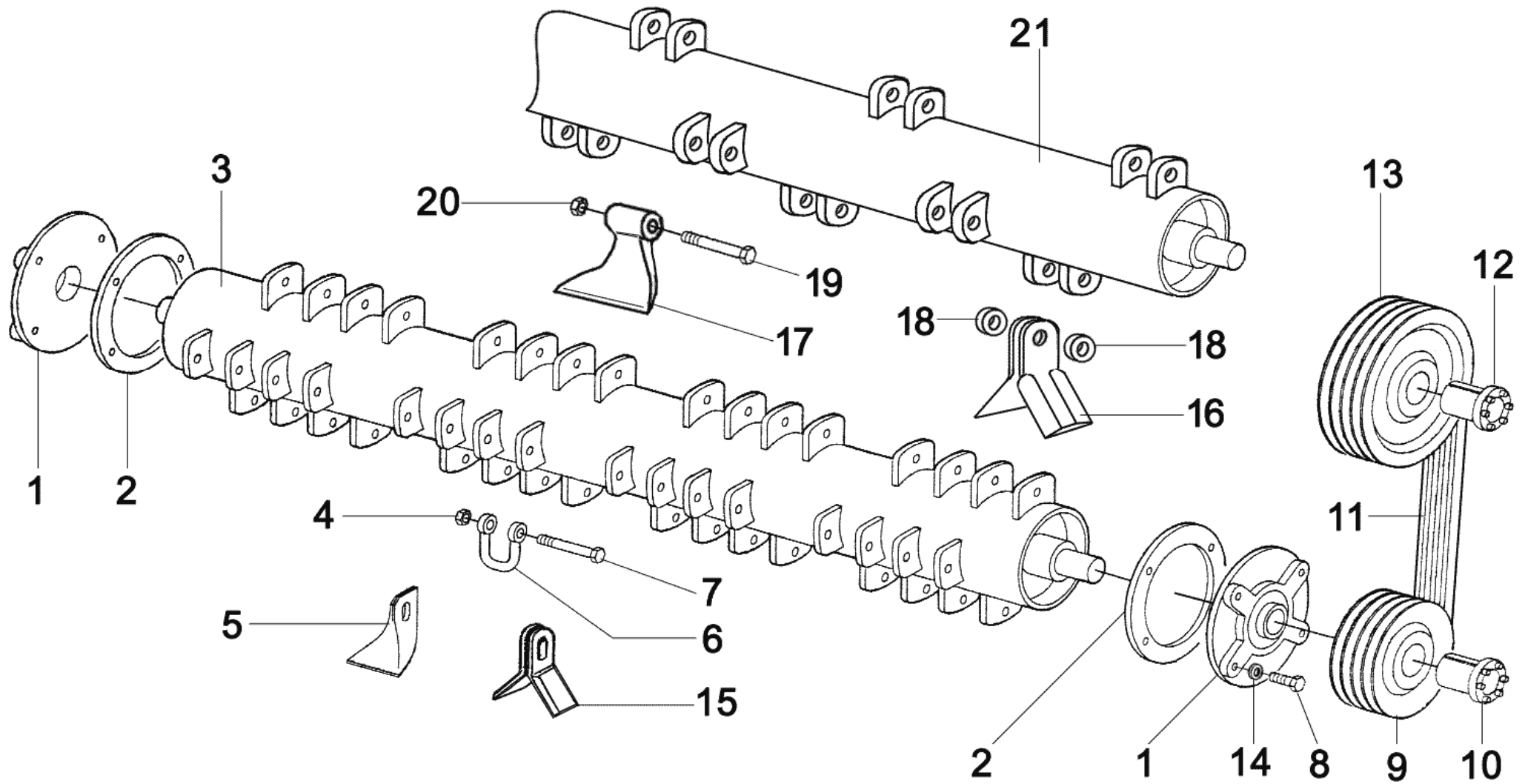


ROTOR  
ROTOR  
ROTORE  
ROTOR  
ROTOR

# TDF-M



## M-2-3-0

| REF | CODE        | QTY | ENGLISH              | FRANÇAIS            | ITALIANO               | DEUTSCH               | ESPAÑOL              | NOTE    |
|-----|-------------|-----|----------------------|---------------------|------------------------|-----------------------|----------------------|---------|
| 1   | 900.100.088 | 2   | SUPPORT UCFC 208     | SUPPORT UCFC 208    | SUPPORTO UCFC 208      | STUETZE UCFC 208      | SOPORTE UCFC 208     |         |
| 2   | 900.240.050 | 2   | COUNTER-FLANGE       | CONTRE-FLASQUE      | CONTROFLANGIA          | GEGENFLANSCH          | CONTRA-BRIDA         |         |
| 3   | 900.251.036 | 1   | ROTOR                | ROTOR               | ROTORE                 | ROTOR                 | ROTOR                | 160     |
| 3   | 900.252.013 | 1   | ROTOR                | ROTOR               | ROTORE                 | ROTOR                 | ROTOR                | 180     |
| 3   | 900.252.014 | 1   | ROTOR                | ROTOR               | ROTORE                 | ROTOR                 | ROTOR                | 200     |
| 4   | 900.103.019 | 40  | NUT BLOCK M12        | ECROU BLOCK M12     | DADO BLOCK M12         | MUTTER BLOCK M12      | TUERCA BLOCK M12     | 160     |
| 4   | 900.103.019 | 48  | NUT BLOCK M12        | ECROU BLOCK M12     | DADO BLOCK M12         | MUTTER BLOCK M12      | TUERCA BLOCK M12     | 180-200 |
| 5   | 900.234.050 | 40  | KNIFE JD             | COUTEAU JD          | COLTELLO JD            | MESSER JD             | CUCHILLA JD          | 160     |
| 5   | 900.234.050 | 48  | KNIFE JD             | COUTEAU JD          | COLTELLO JD            | MESSER JD             | CUCHILLA JD          | 180-200 |
| 6   | 900.240.061 | 40  | U-BOLT               | MANILLE             | CAVALLOTTO             | U-BOLZEN              | SOPORTE              | 160     |
| 6   | 900.240.061 | 48  | U-BOLT               | MANILLE             | CAVALLOTTO             | U-BOLZEN              | SOPORTE              | 180-200 |
| 7   | 900.102.378 | 40  | SCREW TE M12x80      | VIS TE M12x80       | VITE TE M12x80         | SCHRAUBE TE M12x80    | TORNILLO TE M12x80   | 160     |
| 7   | 900.102.378 | 48  | SCREW TE M12x80      | VIS TE M12x80       | VITE TE M12x80         | SCHRAUBE TE M12x80    | TORNILLO TE M12x80   | 180-200 |
| 8   | 900.102.021 | 8   | SCREW TE M12x45      | VIS TE M12x45       | VITE TE M12x45         | SCHRAUBE TE M12x45    | TORNILLO TE M12x45   |         |
| 9   | 900.270.008 | 1   | PULLEY SPB 160 4G    | POULIE SPB 160 4G   | PULEGGIA SPB 160 4G    | REIMENSCH. SPB 160 4G | POLEA SPB 160 4G     |         |
| 10  | 900.269.004 | 1   | CLAMPING 40x80 VK156 | BLOCAGE 40x80 VK156 | CALETTAT. 40x80 VK 156 | KLEMMHU. 40x80 VK156  | ENSAMBL. 40x80 VK156 |         |
| 11  | 900.239.035 | 4   | BELT SPB 1400        | COURROIE SPB 1400   | CINGHIA SPB 1400       | RIEMEN SPB 1400       | CINTA SPB 1400       |         |
| 12  | 900.269.003 | 1   | CLAMPING 35x80 VK156 | BLOCAGE 35x80 VK156 | CALETTAT. 35x80 VK 156 | KLEMMHU. 35x80 VK156  | ENSAMBL. 35x80 VK156 |         |
| 13  | 900.270.009 | 1   | PULLEY SPB 212 4G    | POULIE SPB 212 4G   | PULEGGIA SPB 212 4G    | REIMENSCH. SPB 212 4G | POLEA SPB 212 4G     |         |
| 14  | 900.104.010 | 8   | WASHER 12x24         | RONDELLE 12x24      | RONDELLA 12x24         | ZWISCHENSCH. 12x24    | ARANDELA 12x24       |         |
| 15  | 900.240.060 | 80  | KNIFE                | COUTEAU             | COLTELLO               | MESSER                | CUCHILLA             | 160     |
| 15  | 900.240.060 | 96  | KNIFE                | COUTEAU             | COLTELLO               | MESSER                | CUCHILLA             | 180-200 |
| 16  | 900.111.081 | 40  | KNIFE                | COUTEAU             | COLTELLO               | MESSER                | CUCHILLA             | 160     |
| 16  | 900.111.081 | 48  | KNIFE                | COUTEAU             | COLTELLO               | MESSER                | CUCHILLA             | 180-200 |
| 17  | 900.111.080 | 20  | HAMMER KNIFE         | MASSE MOULE         | MAZZA                  | HAMMER                | MARTILLO             | 160     |
| 17  | 900.111.080 | 24  | HAMMER KNIFE         | MASSE MOULE         | MAZZA                  | HAMMER                | MARTILLO             | 180-200 |
| 18  | 900.252.009 | 40  | SPACER               | ENTRETOISE          | DISTANZIALE            | ABSTANDSRING          | DISTANCIADOR         | 160     |
| 18  | 900.252.009 | 48  | SPACER               | ENTRETOISE          | DISTANZIALE            | ABSTANDSRING          | DISTANCIADOR         | 180-200 |
| 19  | 900.102.374 | 20  | TE M16x100 10.9      | TE M16x100 10.9     | TE M16x100 10.9        | TE M16x100 10.9       | TE M16x100 10.9      | 160     |
| 19  | 900.102.374 | 24  | TE M16x100 10.9      | TE M16x100 10.9     | TE M16x100 10.9        | TE M16x100 10.9       | TE M16x100 10.9      | 180-200 |
| 20  | 900.103.023 | 20  | NUT BLOCK M16        | ECROU BLOCK M16     | DADO BLOCK M16         | MUTTER BLOCK M16      | TUERCA BLOCK M16     | 160     |
| 20  | 900.103.023 | 24  | NUT BLOCK M16        | ECROU BLOCK M16     | DADO BLOCK M16         | MUTTER BLOCK M16      | TUERCA BLOCK M16     | 180-200 |
| 21  | 900.252.015 | 1   | ROTOR                | ROTOR               | ROTORE                 | ROTOR                 | ROTOR                | 160     |
| 21  | 900.252.016 | 1   | ROTOR                | ROTOR               | ROTORE                 | ROTOR                 | ROTOR                | 180     |
| 21  | 900.252.017 | 1   | ROTOR                | ROTOR               | ROTORE                 | ROTOR                 | ROTOR                | 200     |